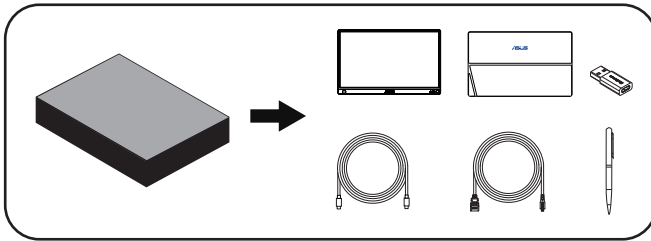


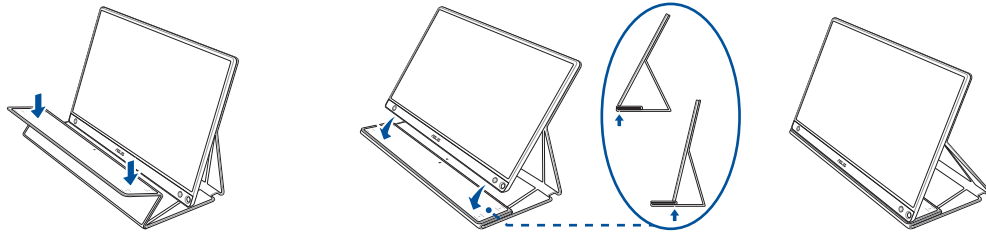
ASUS[®] MB16AMT

1

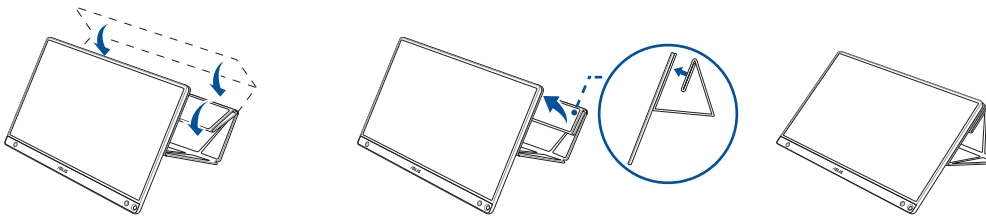


2

A



B



Please check ASUS website for latest User Manual, Driver and Display Widget Software update.

<http://www.asus.com>

Copyright © 2019 ASUSTeK COMPUTER INC. All Rights Reserved.

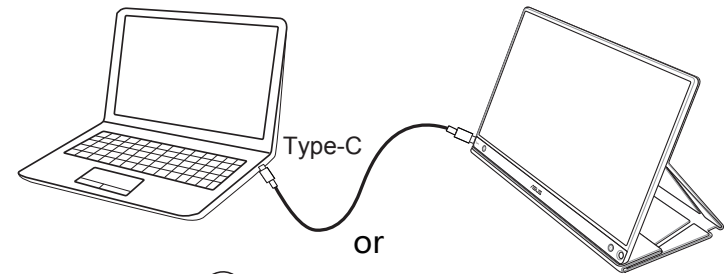


Q41G78S268072C

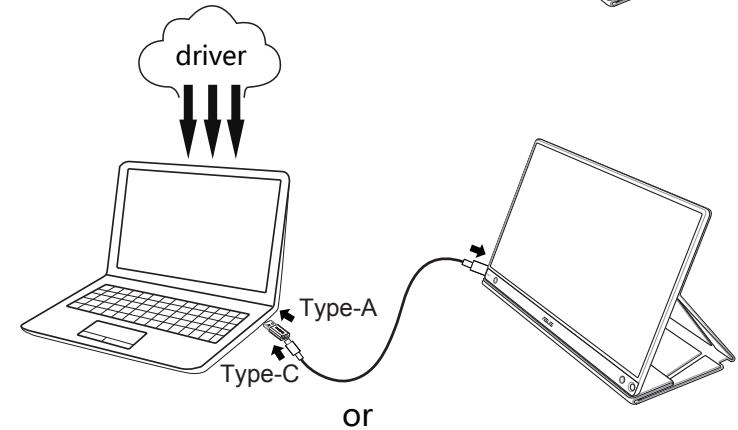
HDMI[™]
HIGH-DEFINITION MULTIMEDIA INTERFACE

3

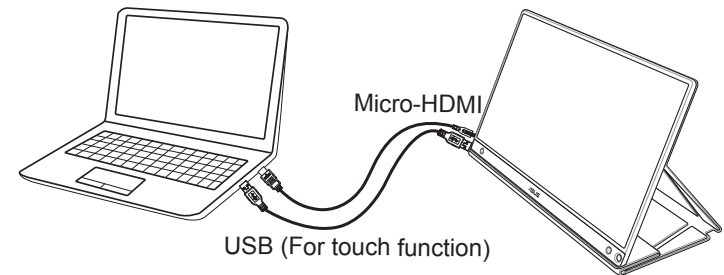
A



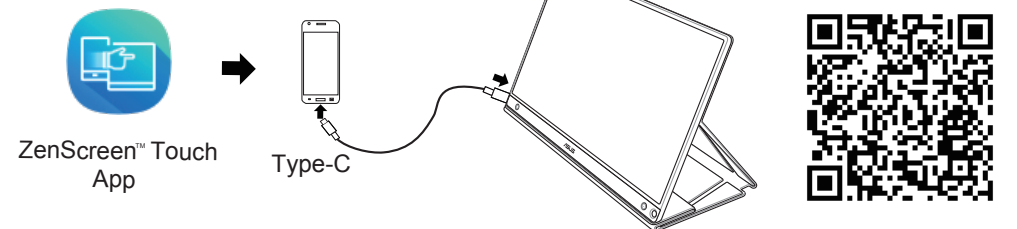
B

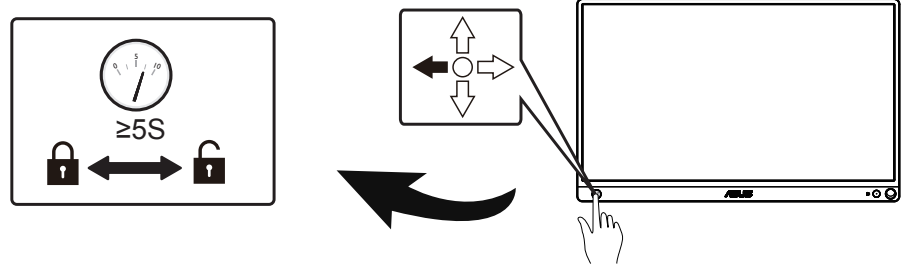
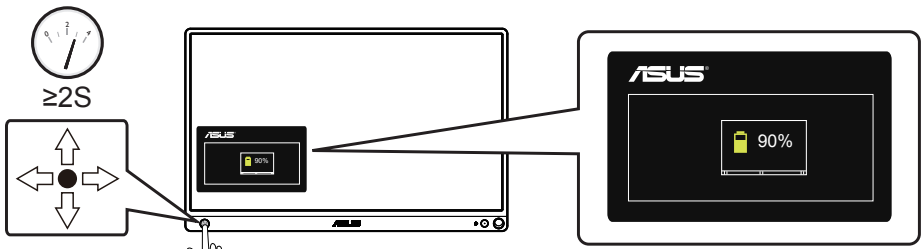


C

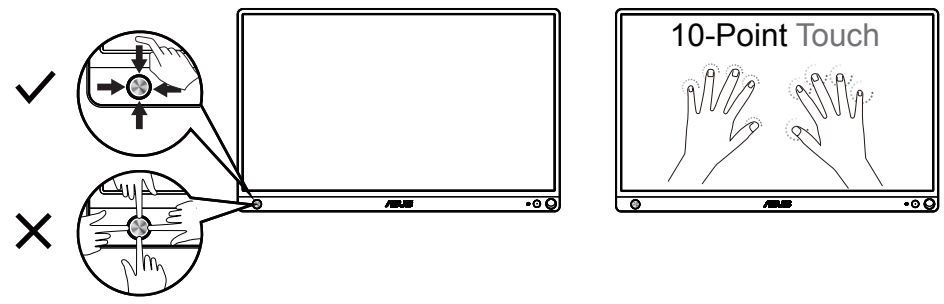


D





- ⬅️ Menu
- ➡️ Close
- ⬅️ Volume
- ➡️ Input Select
- ⬅️ Input Device



Splendid
ASUS MB16A 63%
Scenery Mode HDMI 1080p

- 💡 Standard Mode
- 🎨 sRGB Mode
- 🖼️ Scenery Mode
- 🎭 Theater Mode
- 🎮 Game Mode
- 🌙 Night View Mode
- 🔧 Reading Mode
- 🌑 Darkroom Mode

ASUS CONTACT INFORMATION

- ASUSTeK Computer Inc.
- Address 15 Li-Te Rd., Peitou, Taipei 11259, Taiwan
- Telephone +886-2-2894-3447
- Fax +886-2-2894-7798
- E-mail info@asus.com.tw
- Website <http://www.asus.com.tw/>

- Technical Support
- Telephone +886-2-7736-0456

「產品之限用物質含有情況」之相關資訊，請參考下表

單元	限用物質及其化學符號					
	鉛 (Pb)	汞 (Hg)	鎘 (Cd)	六價鉻 (Cr ⁶⁺)	多溴聯苯 (PBB)	多溴二苯醚 (PBDE)
印刷電路板及電子組件	—	○	○	○	○	○
外殼	○	○	○	○	○	○
液晶螢幕	—	○	○	○	○	○
基座	—	○	○	○	○	○
其他及配件	—	○	○	○	○	○

備考1. "○" 係指該項限用物質之百分比含量未超出百分比含量基準值。
備考2. "—" 係指該項限用物質為排除項目。